



What gets measured (by women), gets managed



Ellen Pfeiffer
IHE Delft

26th of August 2018

World Water Week, Stockholm

The Empowerment Dilemma

“Best practice” when equity means different things in different communities?

“Empowerment” in sustainability projects as a means to different ends?

Does an intervention create space for female agency, or enforce participation in an artificial settings?

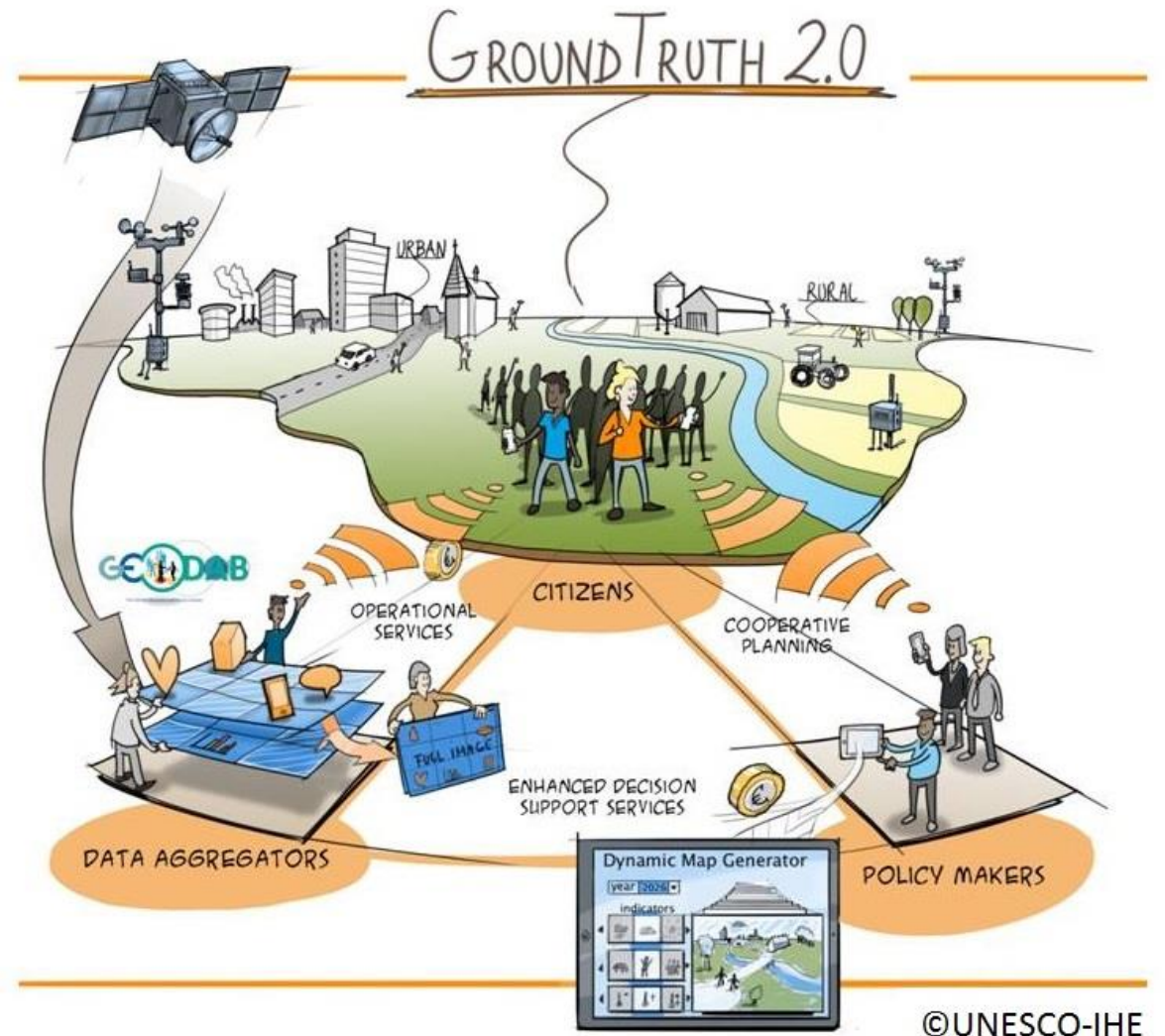
- **Action research: Local citizen monitoring as tool to empower women and marginalized groups**



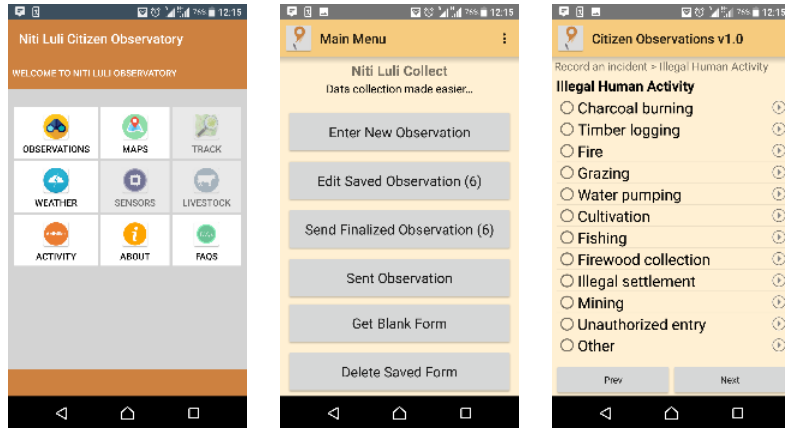
Step 1: Localize & upscale data collection

Data collection is resource intense - capacity to collect local and gender disaggregated data required?

- **Citizen monitoring:** Data streams provided by local citizens using their own mobile devices, complementing existing data sets.



Step 1: Localize & Upscale data collection



Step 2: Decide what gets measured

Switch Perspective

Communities decide which issues and how to monitor

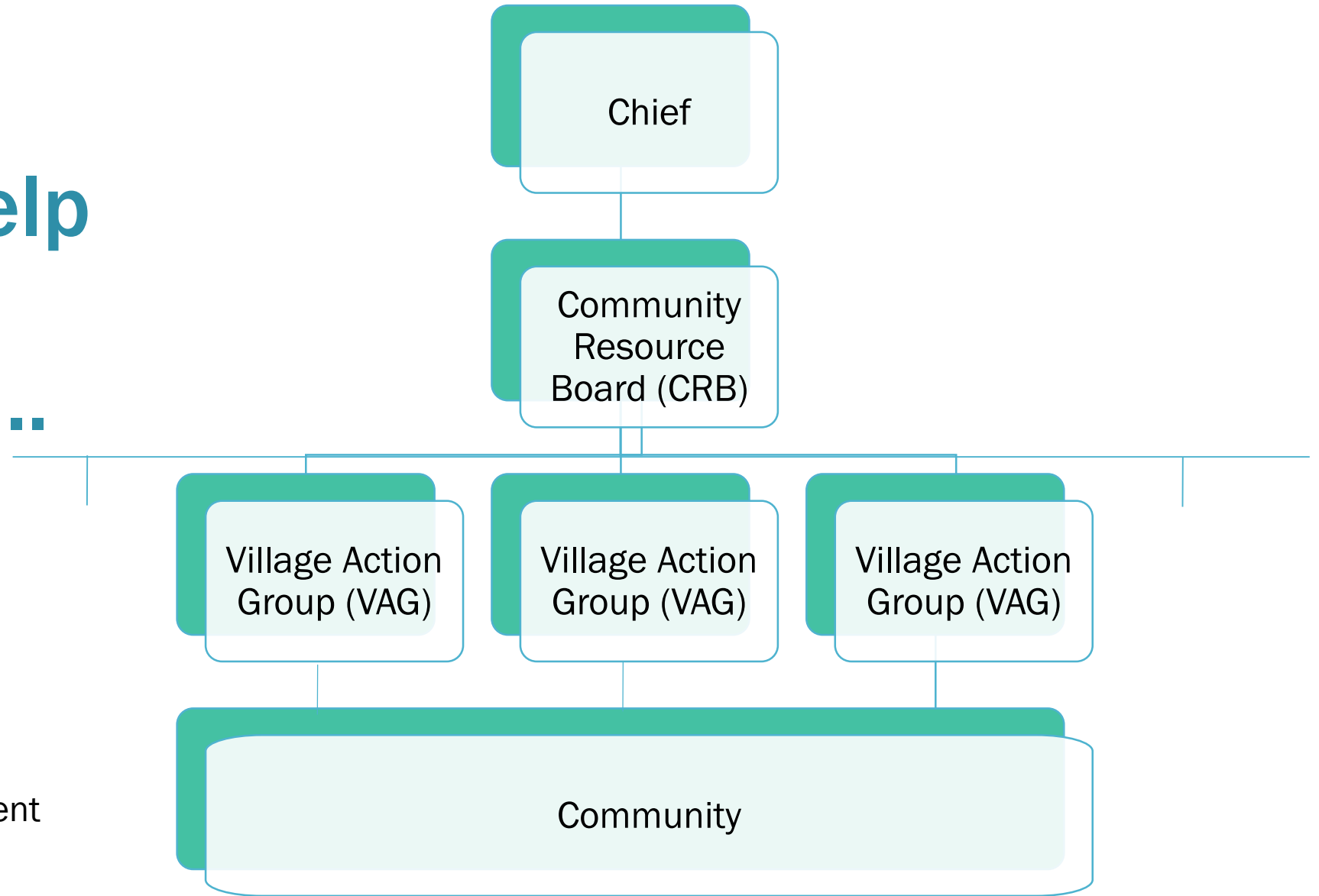


Start on a blank page

Co-Design process to build monitoring that reflect stakeholder reality



Monitoring frameworks: tailored to help specific institutions.....



Organization structure of community resource management under Zambian Wildlife law.

...make compartmentalized management decisions...

Urban Development



Local Food Security



Industrial Agriculture

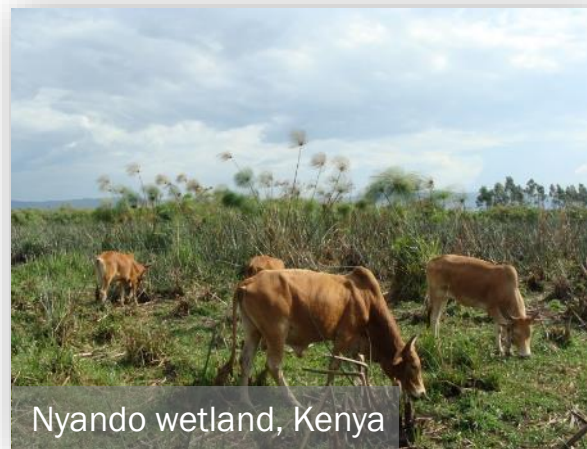


Proposed Mara dam, Kenya
Source: EAWS

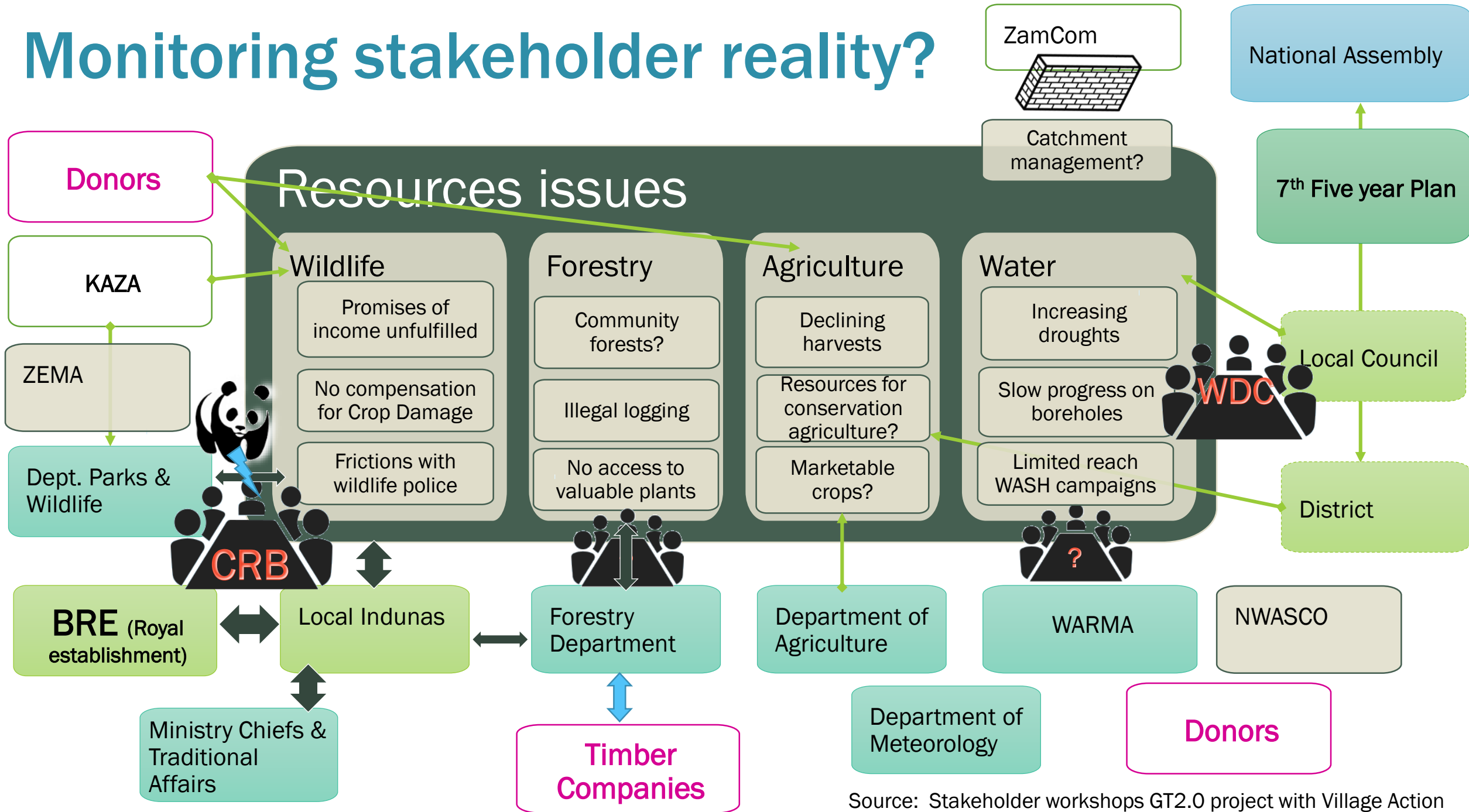
Energy



...with “collateral damage” relevant to local women invisible or monitored “somewhere else”



Monitoring stakeholder reality?



Source: Stakeholder workshops GT2.0 project with Village Action Groups and CRB Sesheke West, Zambia.

Step 2: Decide what gets measured

Switch Perspective

Community decides which issues and how to monitor

Focus on **local value**

Reveal links, trade-offs and impacts of decisions



Start on a blank page

Co-Design process to build monitoring that reflect stakeholder reality

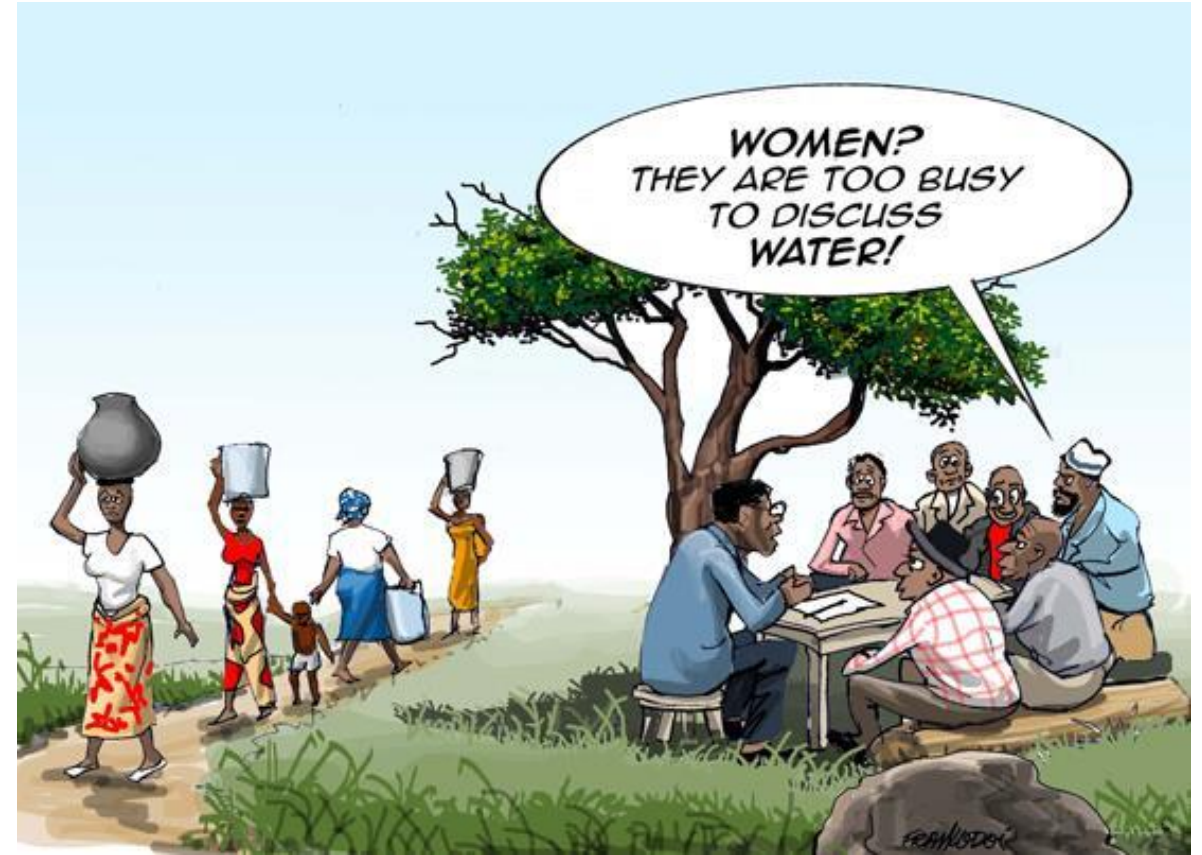
Necessity for any measure requiring local collective action, local buy-in and behaviour changes

Step 3: Challenge how we manage

Does decision-making structure reflect local realities?

Does participation in a gender-biased decision-making structure increase equality?

- Pay attention to sources of agency and status



Source: World Bank WSP 2012 cartoon calendar

<http://www.wsp.org/content/2012-cartoon-calendar>

SDG “journeys” grounded in stakeholder reality?



Target 2.3

“double the agricultural productivity and incomes of small-scale food producers, in particular women”



Target 1.4

“ensure that all men and women, ...have equal rights to ...ownership and control over land and ... natural resources....”



"As a start it is necessary to recognize the distinctive nature of women's experience of poverty and disadvantage. It is not sufficient to simply extend socio-economic rights to women. Substantive gender equality goes beyond treating women in the same way as men and requires re-conceptualizing the rights themselves."

(Fredman, 2013)

Find out more

e.pfeiffer@un-ihe.org

[@GroundTruth20](#) [@wwcc_project](#)

groundtruth2.0
Environmental knowledge discovery of human sensed data

The diagram illustrates the Ground Truth 2.0 process flow: DATA AGGREGATORS (including GEO-DAB and satellites) feed into CITIZENS (who use OPERATIONAL SERVICES and COOPERATIVE PLANNING). CITIZENS then interact with ENHANCED DECISION SUPPORT SERVICES and POLICY MAKERS. A DYNAMIC MAP GENERATOR is also shown as a central tool.

Ground Truth 2.0 is a 3 year (2016-2019) H2020 project to deliver the demonstration and validation of six scaled-up citizen observatories in real, operational conditions, with 4 European and 2 African demonstration cases.

- DEMO CASE BELGIUM** (BE): Environmental quality of life in Flanders
- DEMO CASE NETHERLANDS** (NL): Weather and climate-proof water management
- DEMO CASE ZAMBIA** (ZM): Sustainable natural resource management
- DEMO CASE KENYA** (KE): Biodiversity conservation
- DEMO CASE SWEDEN** (SE): Water quality management in socio-ecological systems
- DEMO CASE SPAIN** (ES): Preparing for climate change

Ground Truth 2.0 demonstrates the technological feasibility, the sustained use and the societal & economic benefits of such citizen observatories. Based on a socio-technical approach using LivingLabs principles, the validation of the Ground Truth 2.0 method will result in generic and comprehensive guidelines for sustainable citizen observatories.

The project is led by Dr. Uta Wehn, Associate Professor of Water Innovation Studies at IHE-Delft.

Partners: IHE, ALTRAN, STARLAB, CREA, HYDROLOGIC, VITO, STOCKHOLM UNIVERSITY, WWF, UPANDE, GAVAGAT, EUNIMAC, TAWMO, AKVO.ORG, IHE DELFT, BIRDLIFE INTERNATIONAL, NATUREUGANDA, GLOBE PLATFORM, ACTIONAID.

Find out more: www.gt20.eu | gt20@un-ihe.org | [@GroundTruth20](#)

THE Coca-Cola FOUNDATION

Women & Water

for Change in Communities

Promoting women and youth as leaders, entrepreneurs and sustainability change agents in rural African communities

Project Email: office@wwcc.wetlandsforum.net • Twitter: [@wwcc_project](#)